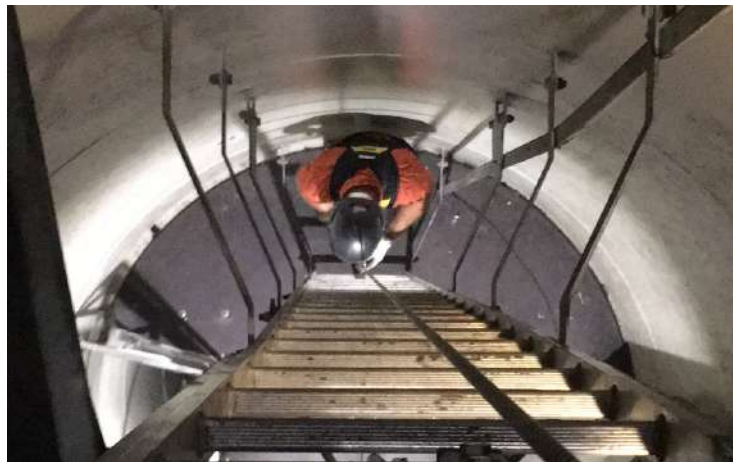


Module *BaSC* Basic Safety CoHE

Basic Safety CoHE
BaSC (4 h)



Objective: The aim of GWO's Basic Safety CoHE training module is to enable the participants to act safely while working in the vicinity of hazardous energies in the wind industry and be able to perform assigned tasks safely.

PROGRAM: BaSC Basic Safety CoHE

1. Introduction to the training
2. Control of hazardous energies basic safety
 - 2.1 CoHE in the wind industry
 - 2.2 CoHE roles in the wind industry
 - 2.3 Basic PPE
 - 2.4 Protections
 - 2.5 Emergency stop buttons in a WTG
3. Lockout-tagout for an ordinary person
 - 3.1 Lockout-tagout in the wind industry
 - 3.2 Lockout-tagout roles in the wind industry
 - 3.3 Lockout-tagout process
4. Mechanical safety
 - 4.1 Why mechanical safety?
 - 4.2 Mechanical safety signs
 - 4.3 The importance of appropriate isolation
5. Electrical safety
 - 5.1 Why electrical safety?
 - 5.2 Low and high voltage
 - 5.3 PE and GFCI / RCD
 - 5.4 Static electricity
 - 5.5 Electrical safety signs
 - 5.6 The importance of appropriate isolation
 - 5.7 Response to an electrical incident
6. Pressure fluid safety
 - 6.1 Pressure fluid safety
 - 6.2 Hydraulic oil injections
 - 6.3 Safety signs
 - 6.4 The importance of appropriate isolation
7. Hazardous energy scenario
 - 7.1 Hazardous energy scenario
8. Training review
 - 8.1 Training review
 - 8.2 Feedback session

Module BaSC Basic Safety CoHE

Duration: 4 hours (1/2 day)
Program BaSC: Sections 1 to 8
Maximum students: 12 people per Edition
Certificate Validity: 24 months

Headquarter:

Cárcar (Navarra) • Spain

Phone: +34 948 674 881 • navarra@totalhse.com

Accredited Centers:

Las Palmas (Canary Islands) • Spain

SEPROM

Phone: +34 902 008 482 • canarias@totalhse.com

Redondela (Galicia) • Spain

Verticalia Formación

Phone: +34 986 401 472 • galicia@totalhse.com

Other accredited centers:

Hatzor Haglilit • Israel

IWTC

Phone: +972 4 632 2095 • israel@totalhse.com

San José • Costa Rica

Desarrollos Floruma

Phone: +506 2282-7468 • sanjose@totalhse.com

Santiago de Chile • Chile

ENACTRAR

Phone: +56 944 402 179 • chile@totalhse.com

www.totalhse.com

